

Knurled inserts

Knurled inserts with fewer production steps and lower costs



Inserts with a knurled outer geometry offer a fastening solution for materials too soft for the force or torque that would normally be required. In general, such inserts are turned or cold formed and require an additional secondary operation for the knurl – introducing additional cost and risk of error. However, Nedschroef does away with the need for secondary operations, except for optional tapping, which results in a cost-efficient production process.

Inserts can be used in materials such as aluminium, plastic or wood.

There is a wide range of possible applications, including the automotive industry, garden tools, sports and outdoor equipment and furniture.

BOOST PRODUCTIVITY AND PROFITABILITY

The NC714 full servo-electric multi station cold former makes forming easier and more efficient, thanks to servo technology that goes beyond conventional mechanical machines. Nedschroef offers a high level of quality, engineering support, and a total proposition that has repeatedly proven successful in the market.

BENEFITS

- Lower cost means competitive pricing and increased profitability
- Reduced energy consumption
- Easy operation reduces human errors and requires less skills
- Easy to integrate into existing manufacturing processes.

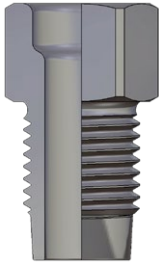
TECHNICAL SPECIFICATION

Range of diameter currently up to 14mm.

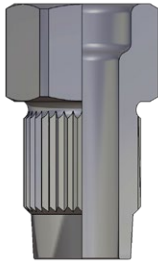
For more information: www.nedschroef.com

FASTENING SOLUTIONS FOR SOFT MATERIALS

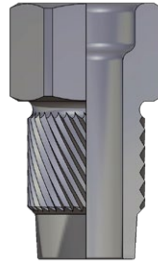
POSSIBLE TYPES OF KNURLING



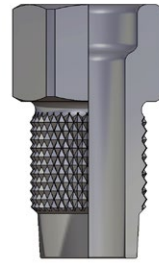
Iso metric thread
maximum pitch 1,75mm



RAA
straight knurl



RBL/RBR
left spiral knurl



RGE
cross knurl with
points up



RKV
cross knurl with
impressed points

A CLOSER LOOK AT THE NEDSCHROEF NC714

- Repeatability and accuracy in manufacturing
- New forming possibilities and weight reduction
- Enhanced production flexibility and material combinations
- High level of rigidity and solidity.
- Length corrections during production possible
- Freely programmable speed-travel characteristics
- Full forging force even at start and creep speed
- No heat induction
- Wear-free due to the direct drive transmission of power
- Integrated quick tool change system.
- User-friendly operation, maintenance and inspection.
- Precise shearing surface with minimal deformation and hardening



Follow us:



For more than 130 years, Koninklijke Nedschroef Holding B.V. has developed, manufactured and supplied fasteners and special parts for the automotive industry. In addition, we design and produce superior forming machines and tools for the metal forming industry. Nedschroef delivers world-class services and innovative, cost-effective solutions. Our expanding global operations offer everything from product design and development to delivery, installation and service, supported by a vast global partner network. 2,400 people at 22 facilities in 11 countries worldwide are committed to our Full Service Provision concept.